

Recombinant Human IL17A & IL17F protein, His-tagged

Cat. No. IL17A & IL17F-1258H **Lot. No.** (See product label)

SPECIFICATION

Product Overview	Recombinant Human IL17A & IL17F protein(Q16552-1(IL-17A)&Q96PD4(IL-17F))(Gly24-Ala155(IL17A) & Arg31-Gln163(IL17F)), fused with C-terminal His tag, was expressed in HEK293.
Species	Human
Source	HEK293
ProteinLength	Gly24-Ala155(IL17A) & Arg31-Gln163(IL17F)
Tag	C-His
Form	Lyophilized from 0.22µm filtered solution in PBS (pH 7.4). Normally 5% trehalose is added as protectant before lyophilization.
Bio-activity	Immobilized Human IL-17A&F, His Tag at 5µg/ml (100µl/well) on the plate. Dose response curve for Anti-IL-17A Antibody, hFc Tag with the EC50 of 1.6ng/ml determined by ELISA.
Molecular Mass	The protein has a predicted MW of 15.1 kDa (IL-17A) & 15.7 kDa (IL-17F). Due to glycosylation, the protein migrates to 16 kDa & 27 kDa based on Tris-Bis PAGE result.
Endotoxin	Less than 1EU per µg by the LAL method.

 Tel: 1-631-559-9269 1-516-512-3133

 Email: info@creative-biomart.com  Fax: 1-631-938-8127

 45-1 Ramsey Road, Shirley, NY 11967, USA

Purity	> 95% as determined by Tris-Bis PAGE;> 95% as determined by HPLC
Storage	Reconstituted protein stable at -80°C for 12 months, 4°C for 1 week. Use a manual defrost freezer and avoid repeated freeze-thaw cycles.
Reconstitution	Centrifuge tubes before opening. Reconstituting to a concentration more than 100 µg/ml is recommended. Dissolve the lyophilized protein in distilled water.
GenelD 2	112744

GENE INFORMATION

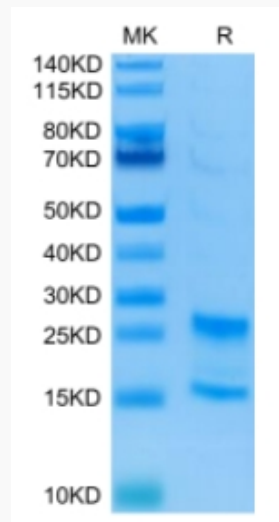
Gene Name	IL17A interleukin 17A [Homo sapiens]
Official Symbol	IL17A
Synonyms	IL17A; interleukin 17A; CTLA8, IL17, interleukin 17 (cytotoxic T lymphocyte associated serine esterase 8); interleukin-17A; cytotoxic T lymphocyte associated protein 8; IL 17; IL 17A; CTLA-8; cytotoxic T-lymphocyte-associated antigen 8; cytotoxic T-lymphocyte-associated protein 8; cytotoxic T-lymphocyte-associated serine esterase 8; interleukin 17 (cytotoxic T-lymphocyte-associated serine esterase 8); IL17; CTLA8; IL-17; IL-17A;
Gene ID	3605
mRNA Refseq	NM_002190
Protein Refseq	NP_002181
MIM	603149

 Tel: 1-631-559-9269 1-516-512-3133

 Email: info@creative-biomart.com  Fax: 1-631-938-8127

 45-1 Ramsey Road, Shirley, NY 11967, USA

UniProt ID	Q16552
Gene Name 2	IL17F interleukin 17F [Homo sapiens]
Official Symbol 2	IL17F
Synonyms 2	IL17F; interleukin 17F; interleukin-17F; IL 17F; ML 1; ML1; IL-24; cytokine ML-1; mutant IL-17F; interleukin-24; ML-1; CANDF6; IL-17F;
mRNA Refseq 2	NM_052872
Protein Refseq 2	NP_443104
MIM 2	606496
UniProt ID 2	Q96PD4

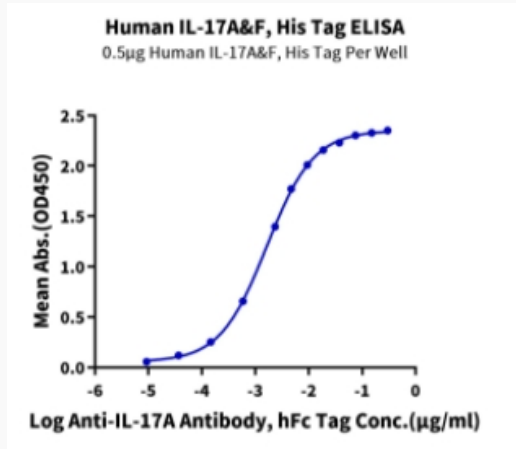
Tris-Bis PAGE


 Tel: 1-631-559-9269 1-516-512-3133

 Email: info@creative-biomart.com  Fax: 1-631-938-8127

 45-1 Ramsey Road, Shirley, NY 11967, USA

ELISA Data



 Tel: 1-631-559-9269 1-516-512-3133

 Email: info@creative-biomart.com  Fax: 1-631-938-8127

 45-1 Ramsey Road, Shirley, NY 11967, USA